



24 nos. 20M / 25 Knots – Patrol Vessel for Indian Customs

APPLICATION REVIEW



TWIN DISC INC

Vessel Specifications

Vessel Type:	Patrol Vessels	Numbers	24 nos.
Owner:	Indian Customs	Engines:	Caterpillar C18
Hull Form:	'V' Hull	RPM:	2200
Builder:	Gold Bridge Engineering.	Hp:	873
Length Over All:	19.70 meters	Gearboxes:	MGX 5145
Beam:	5.55 meters	Drives:	ASD 14
Draft (loaded):	1.40 meters	Propeller:	Rolla Nibral
Displacement:	36 tonnes	Fuel	11000 L
Speed:	25 knots	Water	500 L

TWIN DISC INCORPORATED - 1328 Racine Street, Racine, Wisconsin, 53403-1758, U.S.A.

Ph: 1262 638 4000 Fax: 1262 638 4484, Email: sales@twindisc.com

Web: www.twindisc.com



22 nos. 12.5M / 40 Knots – Interceptor Craft for Indian Customs

APPLICATION REVIEW



TWIN DISC INC

Vessel Specifications

Vessel Type:	Interceptor Crafts	Numbers	22 nos.
Owner:	Indian Customs	Engines:	Caterpillar C-7
Hull Form:	'V' Hull	RPM:	2800
Builder:	Al Dhaen Crafts, Bahrain	Hp:	454
Length Over All:	13.00 meters	Gearboxes:	MGX 5075
Beam:	3.56 meters	Drives:	ASD 10
Draft (loaded):	0.75 meters	Propeller:	Rolla Nibral
Displacement:	11.40 tonnes	Fuel	1900 L
Speed:	40 knots	Water	200 L

TWIN DISC INCORPORATED - 1328 Racine Street, Racine, Wisconsin, 53403-1758, U.S.A.

Ph: 1262 638 4000 Fax: 1262 638 4484, Email: sales@twindisc.com,

Web: www.twindisc.com



15 nos. 15M / 50 Knots – Interceptor Craft for Indian Navy

APPLICATION REVIEW



PRELIMINARY

Vessel Specifications

Vessel Type:	Interceptor Crafts	Numbers	15 nos.
Owner:	Indian Navy	Engines:	MAN R8-600
Hull Form:	'V' Hull	RPM:	2300
Builder:	De Couach, France	Hp:	800
Length Over All:	15.00 meters	Gearboxes:	MGX 5095
Beam:	4.50 meters	Drives:	ASD 11
Draft (loaded):	1.30 meters	Propeller:	Rolla Nibral
Displacement:	17.0 tonnes	Fuel	
Speed:	50 knots	Water	

TWIN DISC INCORPORATED - 1328 Racine Street, Racine, Wisconsin, 53403-1758, U.S.A.

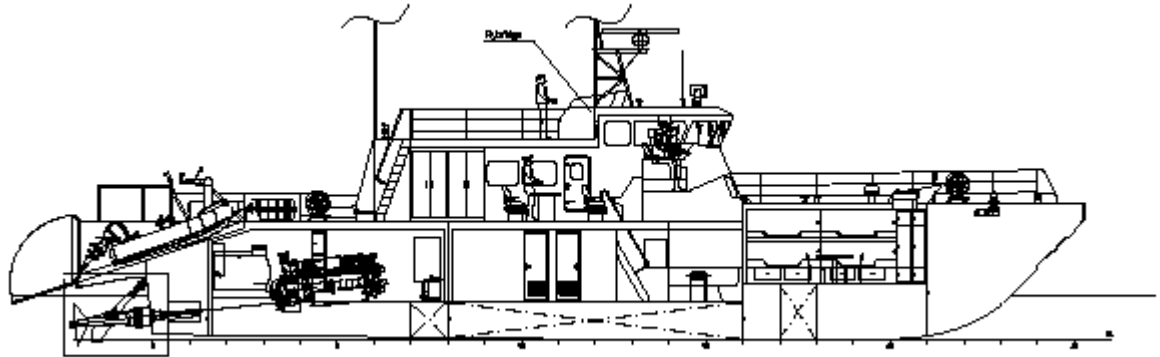
Ph: 1262 638 4000 Fax: 1262 638 4484, Email: sales@twindisc.com,

Web: www.twindisc.com



15 nos. 27M / 45 Knots – Interceptor Boat for Indian Coast Guard

APPLICATION REVIEW



TWIN DISC INC

Vessel Specifications

Vessel Type:	Interceptor Crafts	Numbers	15 nos.
Owner:	Indian Coast Guard	Engines:	16V2000M92
Hull Form:	'V' Hull	RPM:	2450
Builder:	Bharati Shipyard Ltd., Mumbai	Hp:	2184
Length Over All:	27.00 meters	Gearboxes:	MGX 6690
Beam:	5.20 meters	Drives:	ASD 16
Draft (loaded):	1.20 meters	Propeller:	Rolla Nibral
Displacement:	71.0 tonnes	Fuel	
Speed:	45 knots	Water	